

VTA's BART Silicon Valley Phase II Extension

Project Overview & Procurement Opportunities



Agenda

1. Welcome & Project Overview
2. Stakeholder Engagement & Community Relations Upcoming RFP
3. Program Management Services RFP



Welcome & Project Overview

Tom Maguire
Chief Megaprojects Officer, VTA

VTA's BART Silicon Valley Program



Phase I Extension

- 10-mile extension
- Two stations
- BART service started in 2020

Phase II Extension

- 6-mile extension (5-mile subway)
- Four stations
- Newhall Yard & Maintenance Facility







Ringling the Bay with fast, frequent transit

VTA & BART Partnership



Santa Clara County is not part of the BART district. A Comprehensive Agreement and an Operations and Maintenance Agreement provide a framework for the partnership.

Santa Clara Valley Transportation Authority (VTA) Responsibilities

-  Pay all costs associated with the extension
-  Contracting/Procurement
-  Construct to applicable BART/industry standards, codes, and regulations
-  Retain ownership of infrastructure

Bay Area Rapid Transit (BART) Responsibilities

-  Technical assistance
-  Operations
-  Maintenance
-  Service Planning

An integrated VTA and BART team, the Rail System Organization (RSO) has been established and is responsible for developing project specific requirements defining the applicable BART, federal, state, and local industry standard.

Phase I Project – Berryessa Extension



- Two new VTA transit centers with BART stations in Milpitas and Berryessa/North San José
 - Bus transit centers
 - Secure bicycle parking
 - Paid vehicle parking
 - Taxi/TNC/shuttle drop-off/pick-up space
- Opened in 2020
- Funding:

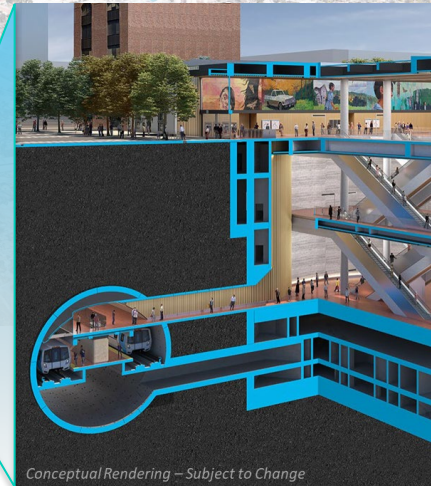


Funding	Source	Amount
Federal	FTA New Starts	\$900M
Local	2000 Measure A	\$1,070M
State	Traffic Congestion Relief Program (TCRP)	\$361M
Total		\$2,331M

VTA's BART Silicon Valley Phase II Extension



- 6-Mile Extension of BART Service
- 5-mile single-bore tunnel, 1-mile at-grade
- Storage Yard & Maintenance Facility
- 4 New BART Stations
- 3 street-level entry/ underground platforms
- 1 at-grade



Project Benefits



Providing equitable transit for low-income communities



Connecting 1.7 M transit-dependent riders to resources every year



2 M people in Santa Clara County will gain access to **→ 3.5 M Bay Area Jobs**



Contribute to an annual **reduction of overall carbon footprint**



Activation of station sites and streets that **foster walkability, vibrancy, activity, and cultivate a sense of community**



Intermodal connection to commuter, intercity, light rail, and regional bus service

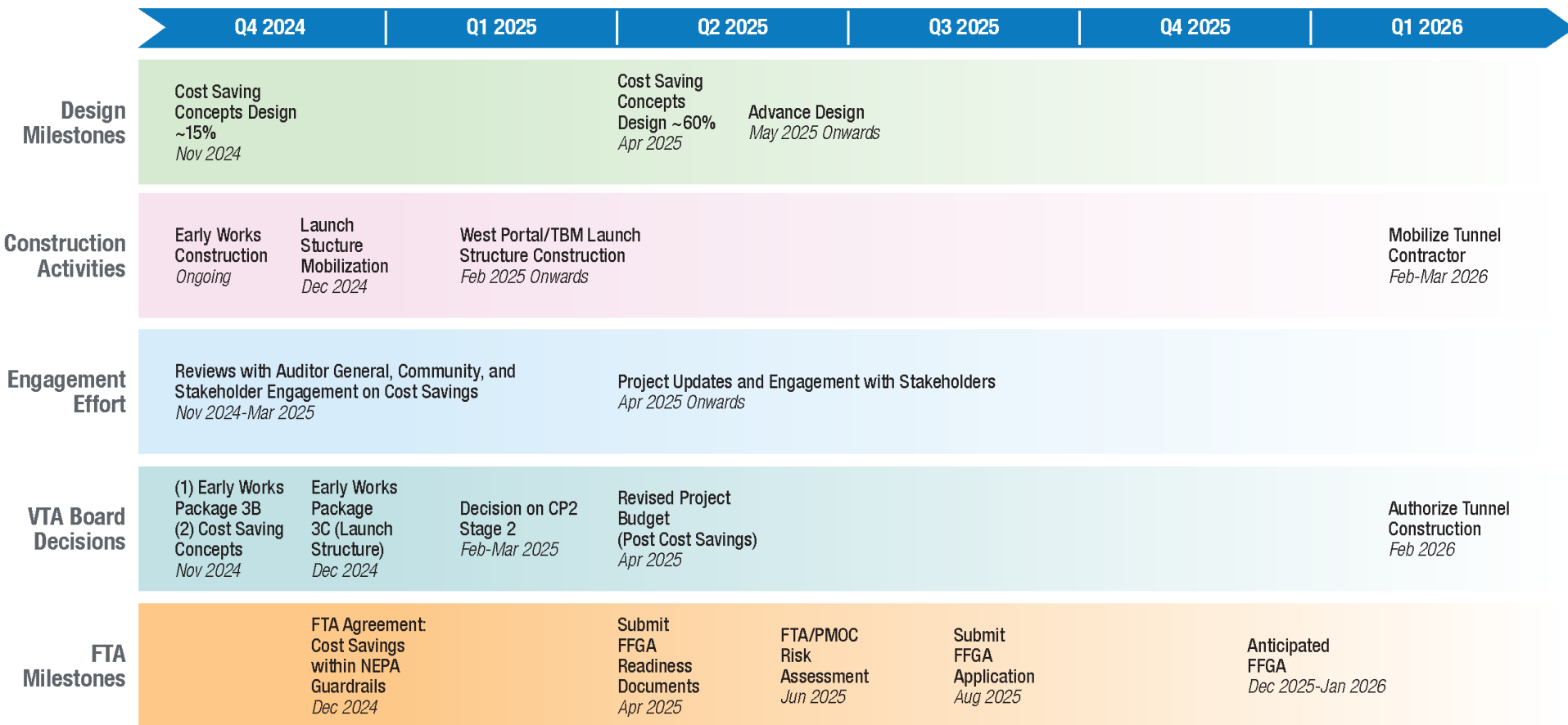


5,600 student riders (San Jose State University/Santa Clara University) are projected to use the system daily



Shift dependency on vehicular transportation and **reduce greenhouse gas emissions**

Path to FTA Full Funding Grant Agreement (FFGA)

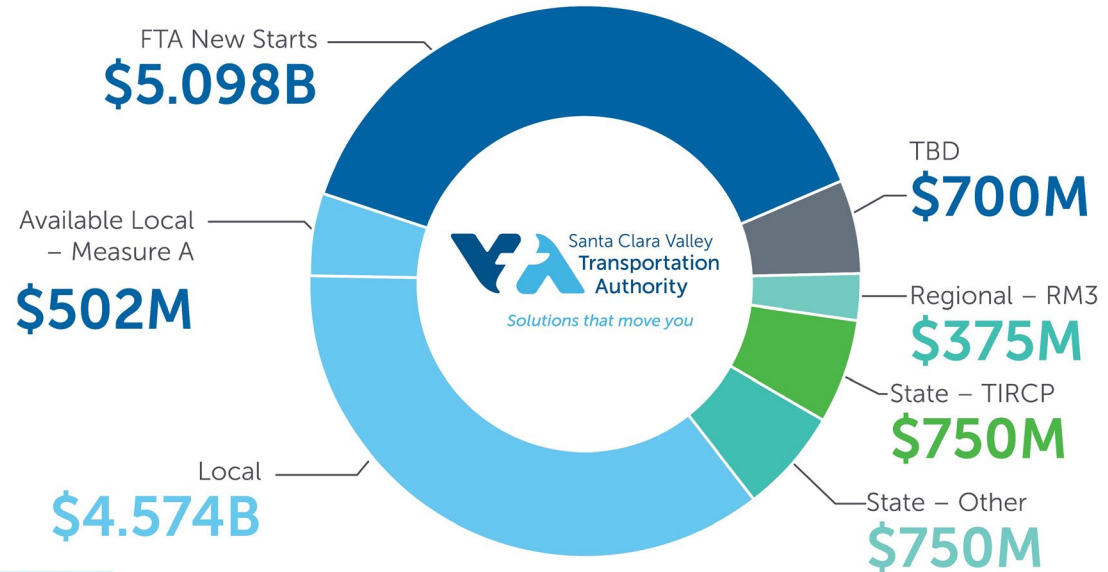


Subject to change pending further review with FTA

Progress on Addressing the Funding Gap



- Cost Saving Effort Continues
- Exploring non-local funding options for **up to \$100M**:
 - Solutions for Congested Corridors Program (SCCP)
 - SB1 Local Partnership Program



Note: Subject to change pending further analysis.

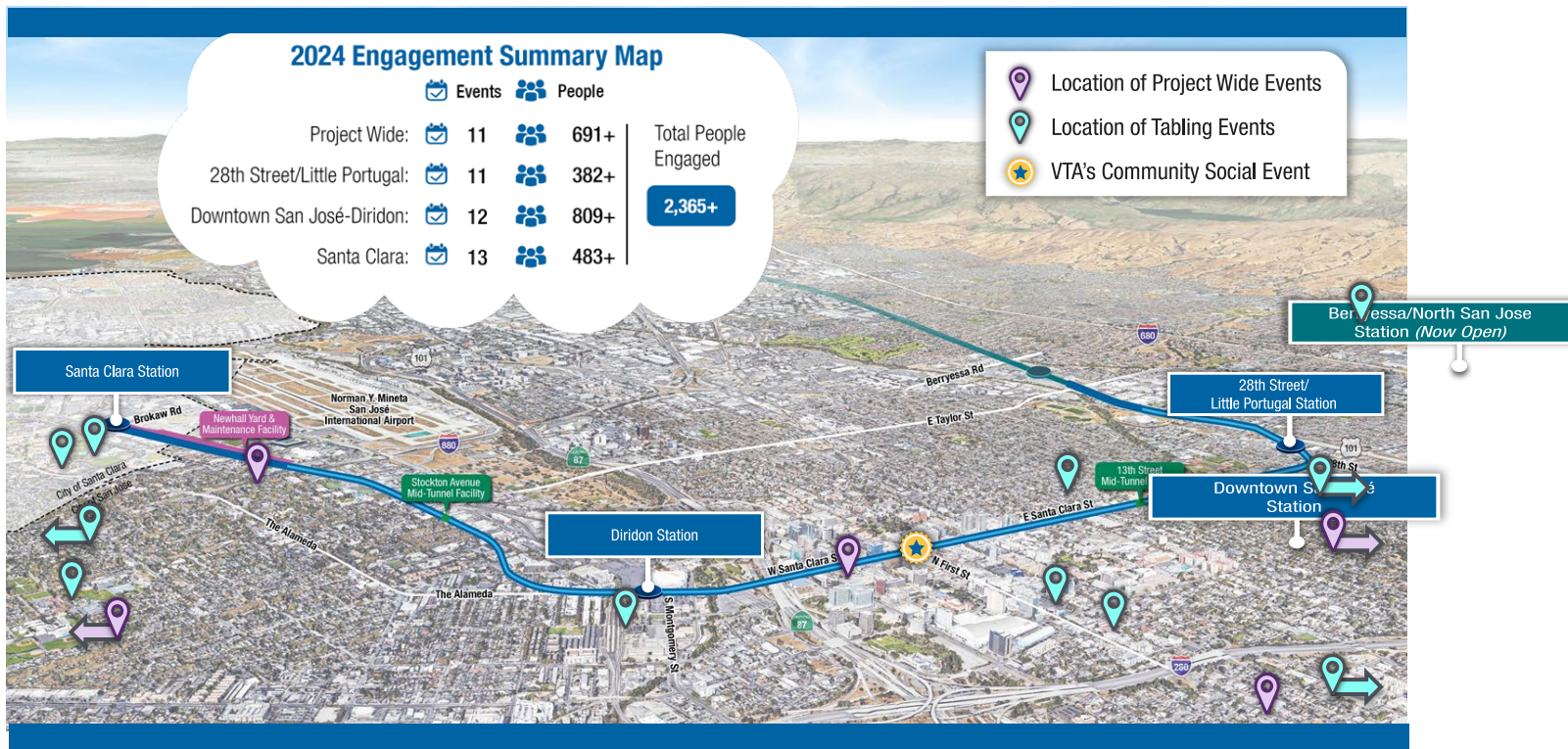


Stakeholder Engagement and Community Relations

What does the External Affairs team do?

Brent Pearse
Planning & Engagement Manager, VTA

2024 Engagement Summary



Construction Outreach



Coordinate with cities and developers on ongoing and upcoming adjacent construction projects



Coordinate with Cities on wayfinding, messaging, street closures, and detours



Monitor that all construction parking is within the construction staging areas



Communicate information from Engineering and Environmental Teams on upcoming construction



Construction Notices

- *Physical door knocking & flyering*
- *Online alerts & website updates*



Resources

- *Interactive Live Construction Map*
- *Sign up for construction activity notices at www.vta.org/bsv2updates*

Thriving Business Program Elements



Eat Shop Local

BUSINESSES OPEN DURING CONSTRUCTION

OnPoint Camera • Limitless Accounting • Café Mocha
Fitness Center • Food Creation • Sandwich Spot

Shop Local Marketing is a VTA sponsored program that provides business media and marketing assistance during the BSM Phase II construction. Make sure to check out the Preferred Vendor List to see how you can support local!

EAT SHOP LOCAL

EL NOPAL • EL MUSICO • EL MUNDO • EL MELON
EL GUACAMOLE • EL GORRO • EL GALLO • EL EWDJI

EAT SHOP LOCAL

Source: Valley Metro Deals and Discounts



Source: SCORE Business mentorship and training

Local Resource Network



Source: Valley Metro South Central Community Office



Source: LA METRO Small Business Report Highlight

Direct Financial Assistance

Project Website



The screenshot shows the homepage of the VTA BART Silicon Valley Phase II Extension Project website. The header includes the VTA logo, the project name, a language dropdown set to 'English', and a search bar. The main navigation menu contains: The Project, Project Benefits, Construction, Throwing Business Program, Community Activity, Transparency Commitment, Resource Library, and Contact. The main content area features a large 'CONSTRUCTION UPDATES' banner with a background image of a construction site and a 'Learn More' button. Below this is a 'News Updates' section with three news items, each with a thumbnail image and a title: 'BART Silicon Valley Extension Project Implements Major Cost Reductions', 'VTA Unveils Project Milestones for the BART Phase II Project', and 'VTA's BSVII Project: What's Next'. At the bottom, there are two more news items: 'VTA's BART Silicon Valley Phase II Extension Project (BSVII Project)' and 'VTA's BSVII Project: Provides Several Benefits to the Community'.

The screenshot shows the 'Construction Activity Map' page on the VTA BART Silicon Valley Phase II Extension Project website. The header is identical to the homepage. The main content area features a map of the project area, showing the alignment and construction activity. The map includes labels for 'CITY OF SANTA CLARA' and 'CITY OF SAN JOSE', and various landmarks like 'San Jose Mineta International Airport', 'Newhall Yard & Maintenance Facility', 'Santa Clara Station', 'River Portal', 'East Portal', '20th Street LRTB Portal Station', and 'Downtown San Jose Station'. A legend titled 'CONSTRUCTION WORK & NOTICE' defines symbols for Phase I Alignment, Phase I Ground-Level Alignment, Phase II Single-Bore Tunnel Alignment, Planned Truck Hoisting Route, Future Station, Construction, Portal, and Newhall Yard & Maintenance Facility. A 'Subscribe to Updates' button is located at the bottom right of the map area.

VTABART.ORG

Upcoming Activities in 2025!



Downtown San José
Field Office Opening
Winter 2025

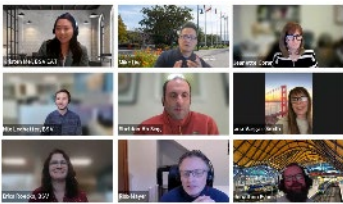


West Portal/TBM Launch
Structure Construction
Anticipated **Winter 2025**

Stations Look and Feel
Community Engagement
Summer/Fall 2025



**Subject to change*



Stakeholder Engagement on
Design & Aesthetics
Spring 2025

Thriving Business Program
Summer 2025



Reoccurring Events

-  **Monthly Meetings and Activities**
 - VTA Board of Directors Meetings
 - VTA BSVII Oversight Committee Meetings
 - Tabling Events
-  **Quarterly Community Working Group (CWG) Meetings**



Scope overview:

- SBE/DBE Goals ~ 5%
- VTA is seeking a firm to provide support services in the implementation of the BART Silicon Valley Phase II Project activities in the areas of planning, station design and access, outreach, business relations, communications, agency coordination and environmental compliance and reporting.
- Provide staff augmentation services for External Affairs team, including but not limited to, working under the direction of assigned VTA staff and provide full-time, part-time, and on-call staffing.



Stakeholder Engagement

- Board range of services including support and implementation of the Project's Construction Outreach Management Program, Master and Cooperative Agreements with key stakeholders, Community Working Groups, business and community relations.
- Support in the execution of activities associated with station area planning, TOD, and identifying funding for public art in the stations or station area, from interim design through commencement of revenue service.
- Design and planning conformance reviews, land use development review, technical support services for stakeholders including Cities. Track City feedback and service as technical liaisons.



Community Relations

- Support activities including construction outreach, milestone event events including TBM launch, Station Groundbreakings, and thriving Business Program associated with major construction
- Support in the execution of activities associated with station area planning, TOD, and identifying funding for public art in the stations or station area
- Database management, website management, communications strategy support, media support, special events
- Support construction community outreach, Community Working Groups and Title VI compliance



Program Management Services

Monica Born
Deputy Chief/Program Director, VTA



VTA is seeking a Program Management Consultant (“PMC”) to provide critical project and program management for the successful delivery of the BSVII Project within budget and schedule.

Key Areas include:

- Quality Management
- Safety & Security
- Environmental
- Implementation Management
- Engineering Management
- Project Controls
- Project Delivery

DBE Goal: **11.4%**



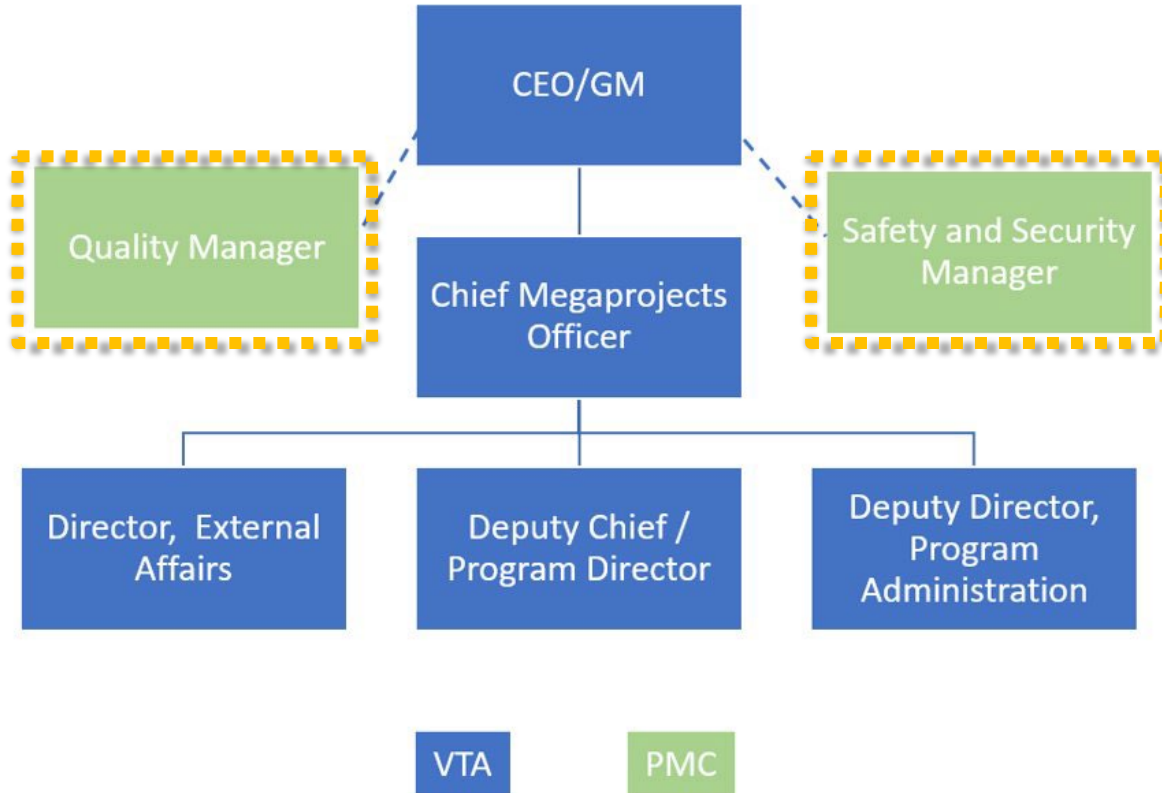
- Project understanding and schedule
 - Visit our website: vtabart.org/the-project
 - Identify BSVII issues and challenges

- Work Plan
 - How your team proposes to deliver on BSVII
 - Where has your team done it before
 - Identify ways to gauge progress towards completion
 - Include tasks and personnel not listed and rationale

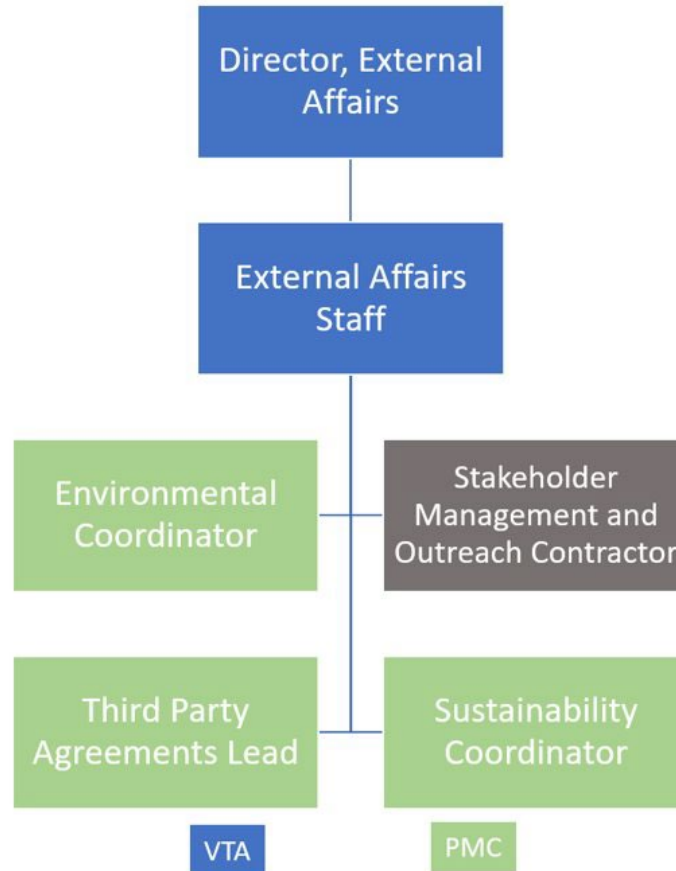


- Quality Manager
- Safety and Security Manager
- Engineering Manager
- Program Controls Manager
- Contract Package 2 Project Manager
- Contract Package 2 Engineering Manager
- Deputy Program Director / PMC Project Manager

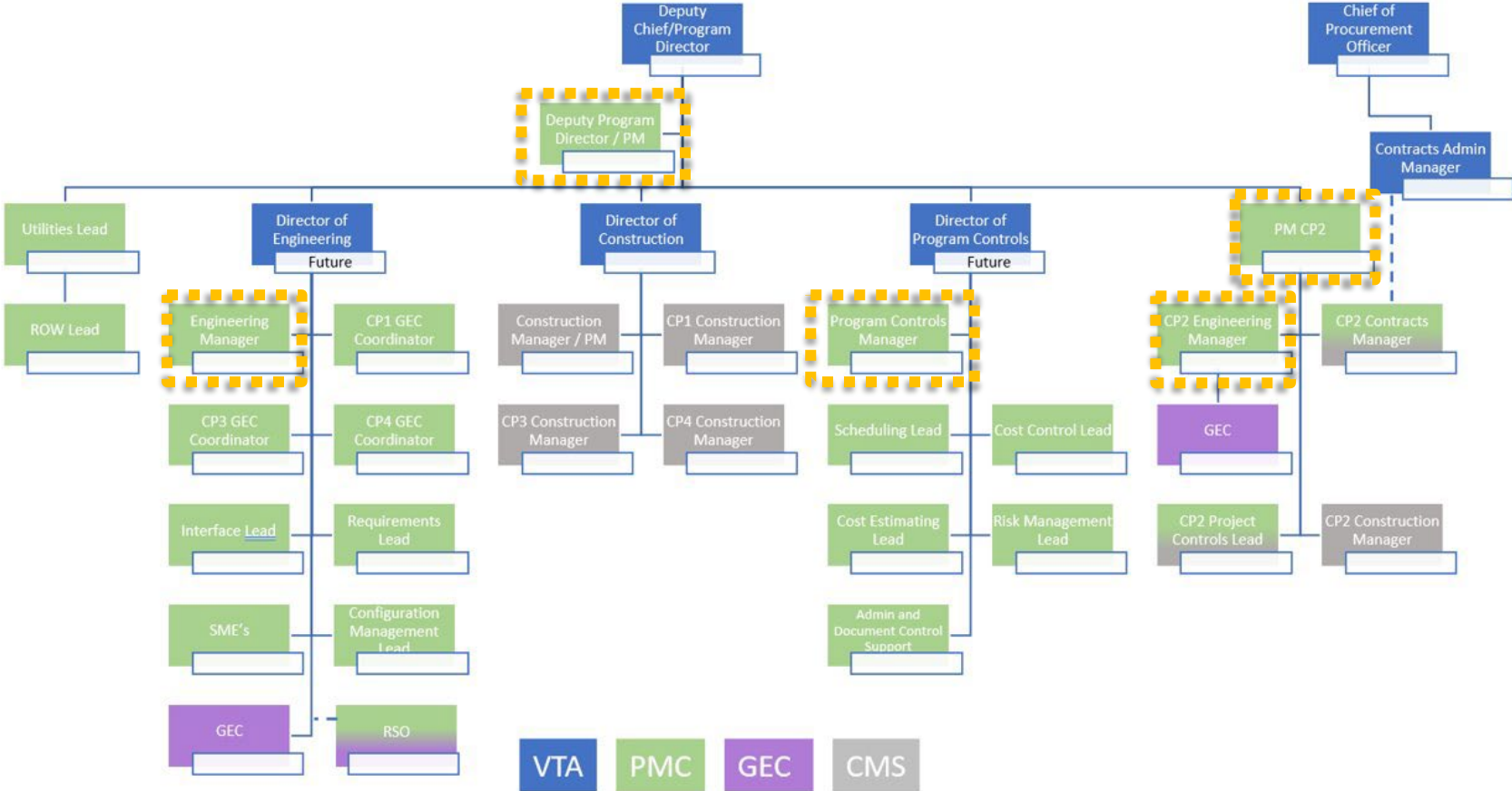
Organizational Structure



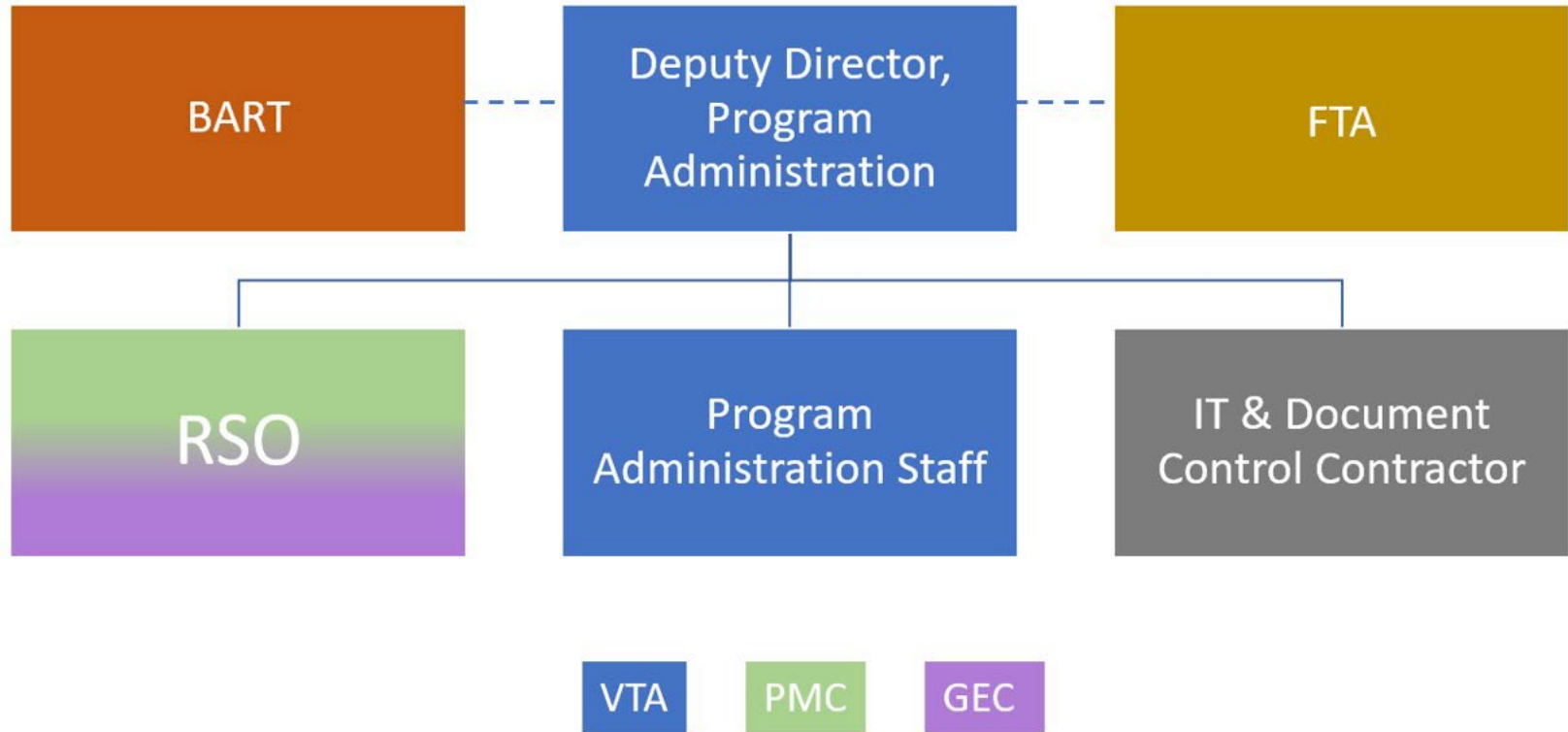
Organizational Structure – External Affairs



Organizational Structure – Design/Construction



Organizational Structure – Program Administration



Evaluation Criteria



Qualifications of the Firm	10 points
Organization and Staffing	15 points
Qualifications of Key Personnel	40 points
Work Plan / Project Understanding and Schedule	35 points
TOTAL	100 points



Thank you!