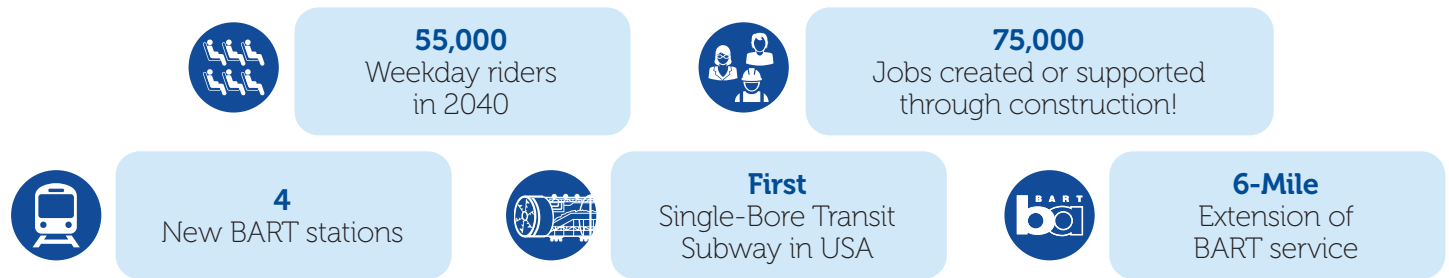


FACT SHEET:

VTA'S BART SILICON VALLEY PHASE II EXTENSION PROJECT



At a Glance



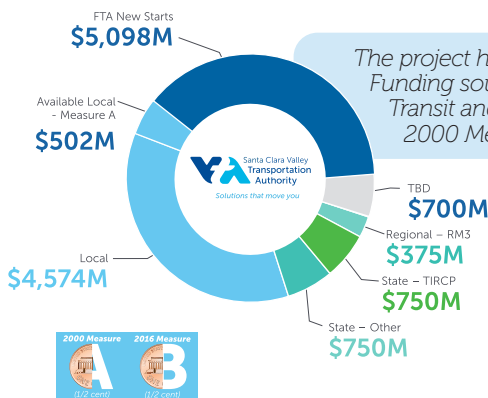
VTA's BART Silicon Valley Phase II Extension (Phase II Project) is a six-mile, four-station extension of BART from Berryessa/North San José Station (opened 2020) through downtown San José to the City of Santa Clara. The Phase II Project is planned to include an approximately five-mile subway, three stations with underground platforms (28th Street/Little Portugal, Downtown San José, and Diridon), one ground-level station (Santa Clara), a train maintenance and storage facility, and additional facilities.

** Directly, indirectly and through induced benefit*

Benefits



Funding & Schedule



The project has various funding sources at the federal, state/regional, and local level. Funding sources include the Federal Transit Administration New Starts Program, the Transit and Intercity Rail Capital Program, Regional Measure 3, 2000 Measure A, and 2016 Measure B.



